

Link Bar AC02-S22 Installation

Following this procedure will ensure that the link bar is installed correctly and adjusted properly. Failure to adhere to this procedure can result in:

- Premature link bar failure
- Poor gripper function performance
- Premature hub and spindle failure
- Pivot bracket wear

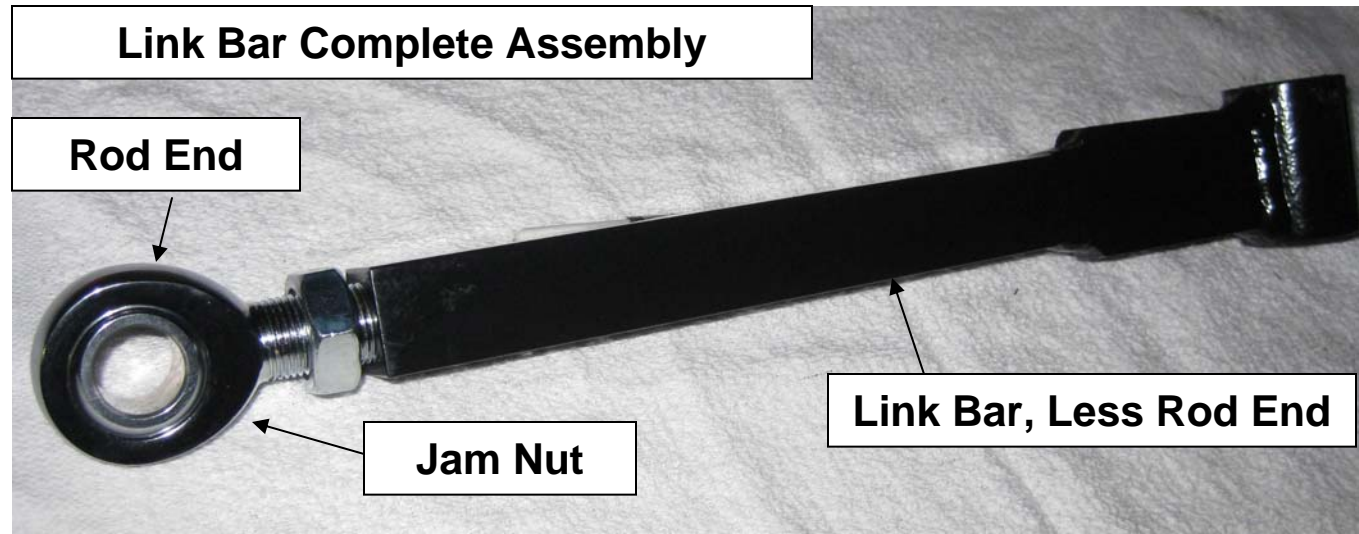
| Description | Old P# | New P# |
|-------------------|----------|-----------|
| Link Bar Complete | AC02-S22 | AC02-DB22 |
| Link Bar Only | SV4-016 | DB-F01 |
| Rod End | B17-0011 | B17-MRE |
| Jam Nut | FN-8075 | FN-8075 |

Two key components determine successful installation:

1. Proper installation
2. Proper link bar adjustment

In order to carry out the checks correctly, ensure:

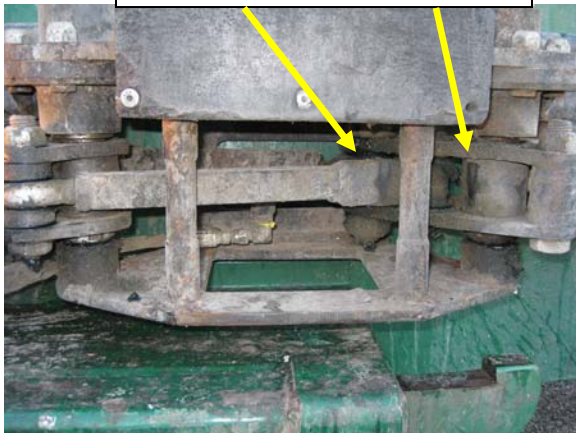
1. Gripper arms AC4-A001 are in good condition and free from bends
2. Hubs and spindles AC02-021 are working and are tight
3. Link bar AC02-S22
4. Small rubber pads AC02-037 are in good shape



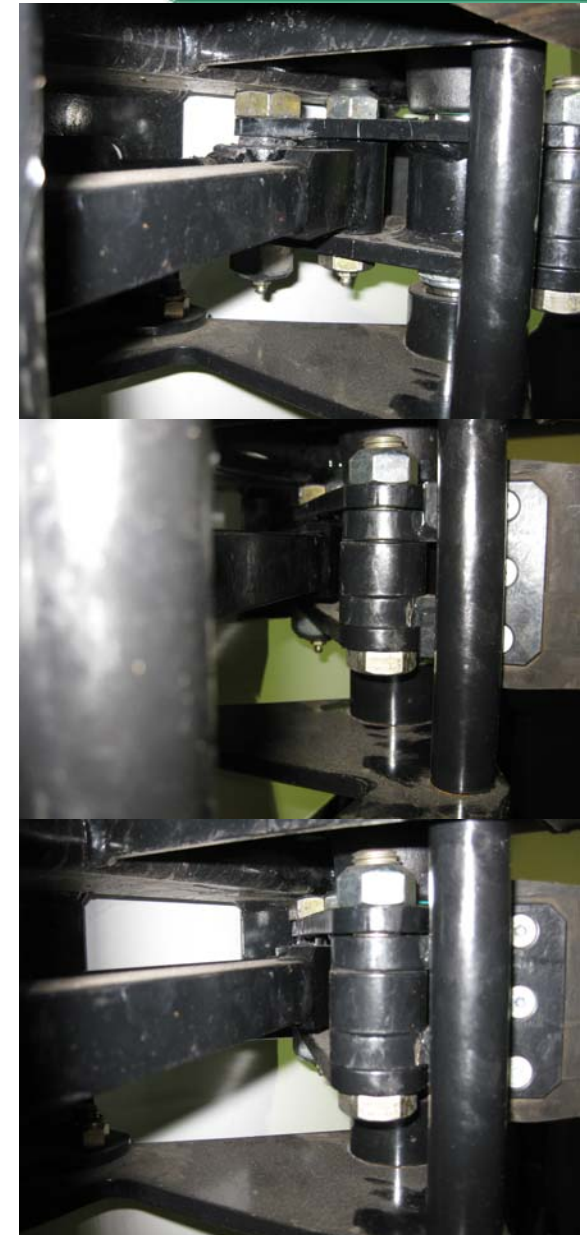
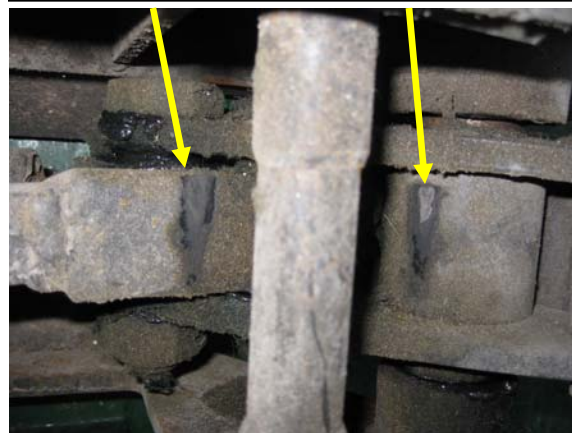
Link Bar Interference Inspection

1. With the truck off, grippers closed and key in pocket, use a flashlight and inspect the link bar. Determine if the link bar is impacting the forward pivot ACO2-S33. There should be no contact between the link bar and the pivot collar.
2. If any of the above inspections reveal anything out of normal, adjust the link bar.

Inspect Here



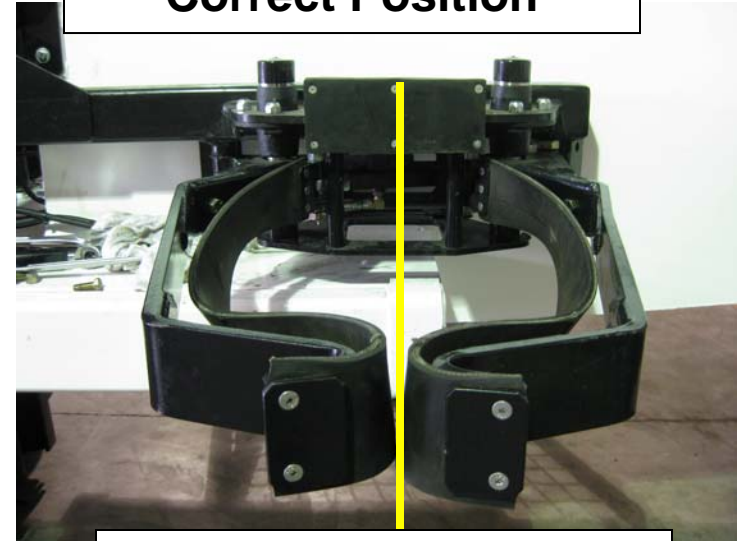
Interference Requires
Link Bar Adjustment



Gripper closed position inspection.

1. Step out of the truck See that the gripper tips are closed on the center point of the large rubber pad.
2. The rubber belting of the tips of the grippers should touch dead center of the large rubber pad. Note the results.

Correct Position



Incorrect Position



Requires Link Bar
Adjustment

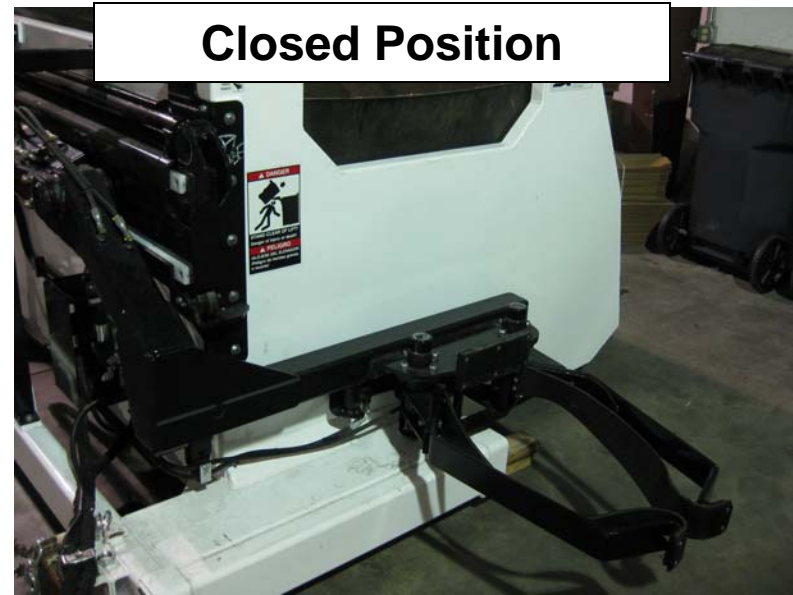
1. Gripper home position inspection

1. From the curb side operating position (if available), turn the truck on, safely activate the hydraulic system and curbside controls.
2. Run the grippers open and closed repeatedly. Observe the action of the grippers contacting the small rubber pads both forward and rear when grippers open to the home position.
3. The back of the grippers should impact the two small rubber pads simultaneously and without smashing or crashing against the pads. Also, note if the forward gripper is contacting the nose of the container
4. Note the results of the inspection, run the grippers to the closed position, Turn off the truck and pocket the key.

Open Position



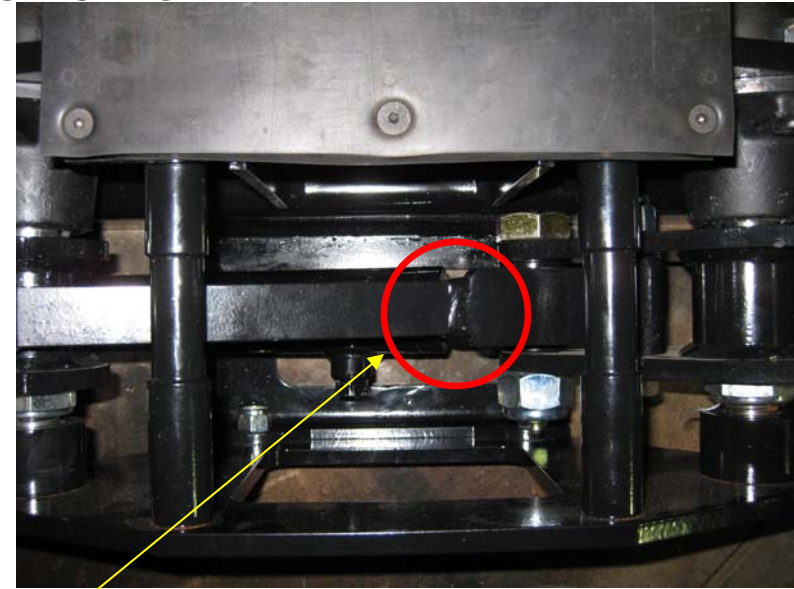
Closed Position



Confirm Correct Link Bar Installation

Improper installation – it is possible to install the link bar inverted (up side down)

Inspect the link bar and ensure that the two piece welded “flat” surface is facing outward (curbside). This is the correct position. If the link bar is inverted, reposition the link bar to the correct position.



Offset facing inward - Incorrect

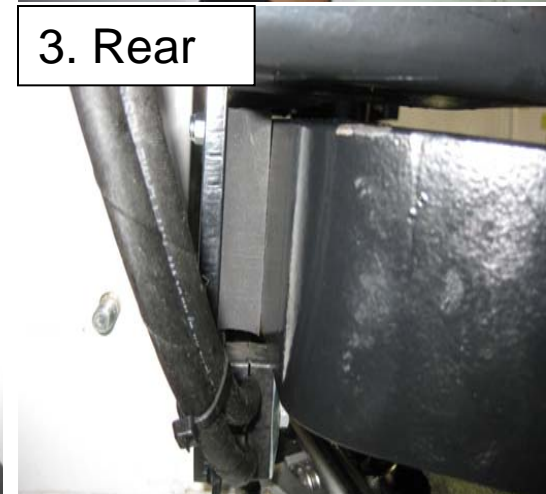
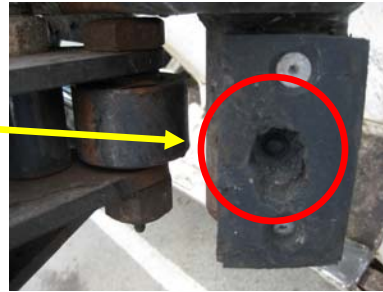
Offset facing outward - Incorrect



Link Bar Adjustment

1. Remove the Curotto Can from the truck with grippers open
2. Remove the hydraulic lines from the gripper cylinder CCP-S19
3. Remove AC4-A003 pin and place both grippers to the home position – resting against the small rubber pads – See Inset Note
4. Loosen jam nut FN-8075 on the rod end B17-0011

Ensure pads are in good condition. Using a nut on the counter sunk gripper bolt will ruin rubber pad and cause gripper to hyperextend.



Link Bar Adjustment...(con't)

5. **Adjust the rod end to line up with the holes on the pivot bracket AC02-S34 making sure that both grippers are in the home position against the small rubber pads**
6. **Replace the AC4-A003 pin with buckle AC02-S23**
7. **Set jam nut on rod end**
8. **Replace hydraulic lines on gripper cylinder**

