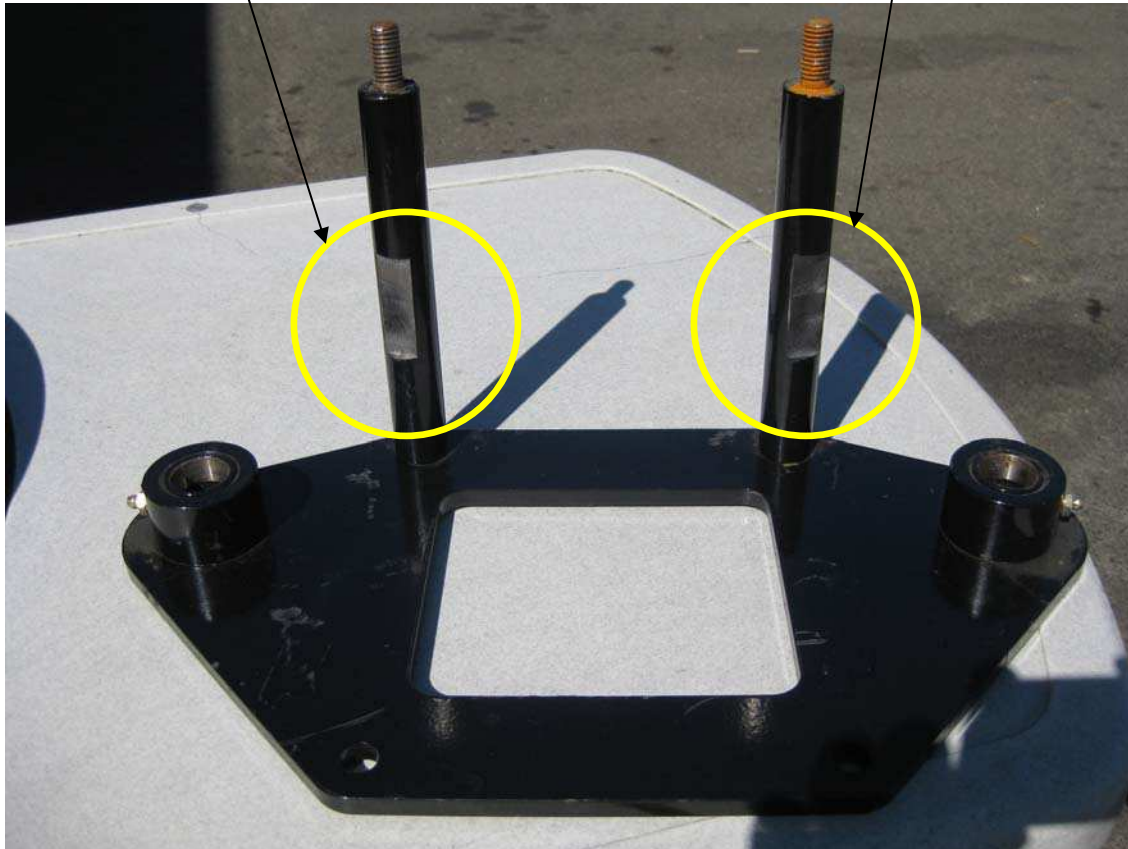


AC02-S21 Dogbone Correction



Old style –
arm on front
of container

New style –
arm on back
of container



- Issue: It is possible that the link assembly can impact the dogbone spacer causing the linkbar to fail prematurely. In addition, the new linkbar design is thicker requiring this correction to be completed before the new linkbar is installed.
- Correction: Grind spacer Part # AC02-114 1/8" as shown on the photo aside.
- Determine which spacer requires correction – see note on photo.
- To identify the area to grind, inspect the spacer where linkbar is hitting. Mark the area, remove dogbone and grind.