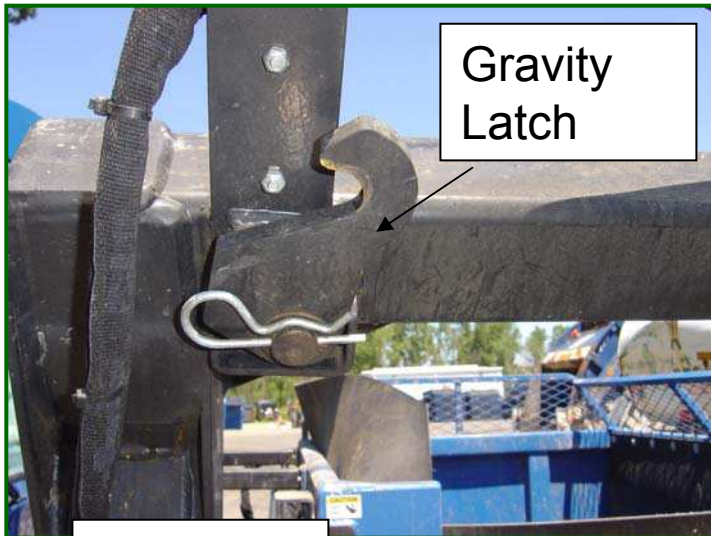


Gravity Latch Check

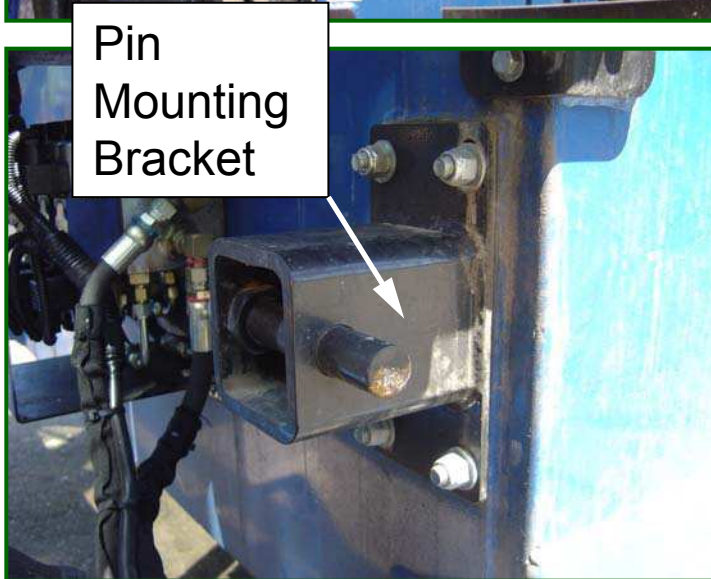
Gravity Latch Check



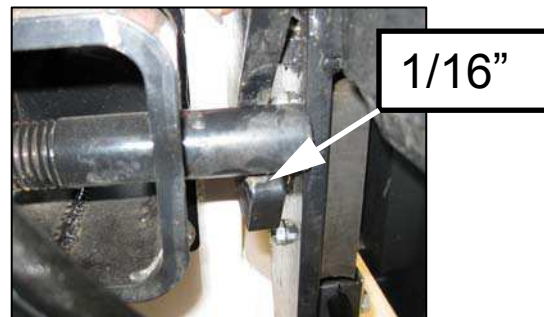
Step 1. Make sure all three cylinders are fully retracted. Then shut off truck and REMOVE key.

Step 2. Check that the gravity latch is present by reaching around under the container.

Step 3. Check that the gravity latch can rotate freely so that when the can is upside down the hook freely swings back and latches onto the anchor pin – clearance to the hook to the pin should be 1/16". If pin is worn flip it over. Is it straight is it engaging is hook okay



Action: If the gravity latch does not engage the anchor pin, the pin assembly may require adjustment. Adjust clearance by loosening the four mounting bolt securing the pin mounting bracket and adjusting to 1/16" clearance.



The Curotto Can should not be operated until the gravity hook is working correctly.



Result: A properly adjusted gravity latch will prevent the arm from creeping out while the container is in the hopper.