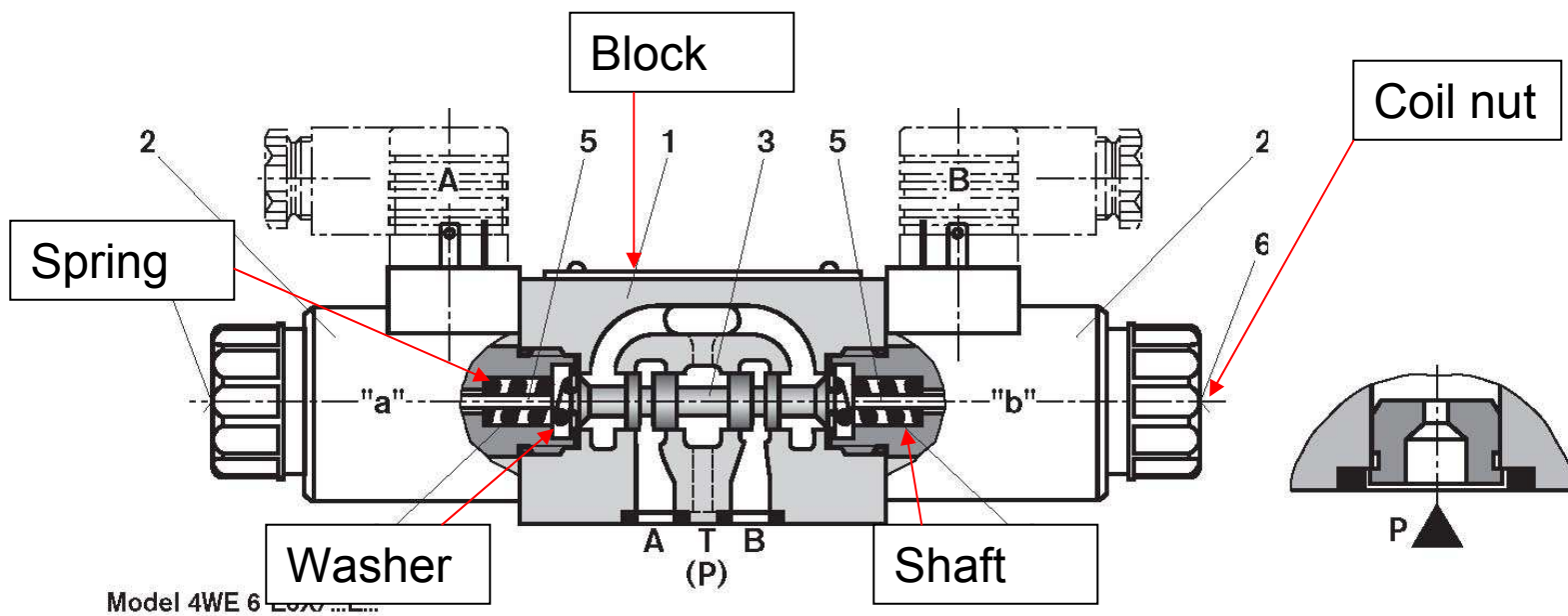


Clean Rexroth Control Valve



If a function is “stuck” it is likely that contamination has caused the spool to stick. The valve can be cleaned easily by doing the following:

- Remove the valve and disconnect the coil nuts
- Using a wrench, remove the two shafts from the blue Rexroth block, taking care not to lose the spring and washer
- Using WD40 spray out the block and internal surfaces and parts, then blow out with clean air. Reassemble and reinstall
- To flush the system, remove the hoses from the cylinder and runs the circuit back and forth discharging hydraulic oil into a five gallon bucket until half full. Do this for all three functions
- Once the system is flushed, install the new RRCV-01



Disassembled RRCV-01 Valve

